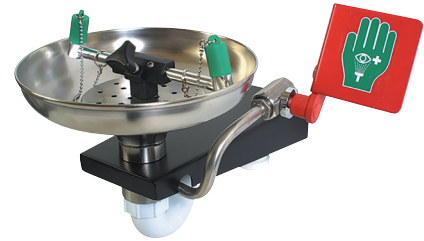


85GEW

Emergency Eye/Face Wash - Plumbed-in Type: Wall Mounted

Open 316L stainless steel bowl, wall-mounted emergency eye/face wash featuring twin spray nozzles protected by dust covers. When activated via the push plate, the water jets lift off the dust covers. The eye wash diffusers are fitted with fine mesh strainers and an individual flow controller designed to give a gentle flow of aerated water. Includes universal eye wash sign for enhanced visibility. ANSI compliant.



Specifications

MATERIALS OF CONSTRUCTION	
EYE/FACE WASH BOWL	316L stainless steel
EYE/FACE WASH DIFFUSERS	Chrome plated brass with stainless steel mesh
OPERATING VALVE	316L stainless steel, two piece stay open valve
SERVICES	
WATER INLET	1/2 in Female NPT
DESIGN OPERATING PRESSURE	2.0 to 6 BAR G (29 to 87 PSI)
TEST PRESSURE	10.3 BAR G (149 PSI)
MINIMUM FLOW RATES	Eye/Face Wash: 11.4 liters/minute minimum (3 US Gallons)
ENVIRONMENTAL OPERATING TEMPERATURE	
MINIMUM AMBIENT OPERATING TEMPERATURE	5° C (41° F)
MAXIMUM AMBIENT OPERATING TEMPERATURE	35° C (95° F)
ACTIVATION/OPERATION	
EYE/FACE WASH	Push plate operated
NOMINAL WEIGHTS and DIMENSIONS	
DIMENSIONS (WxDxH)	429 mm (16.9 in) x 400 mm (15.7 in) x 295 mm (11.6 in)
WEIGHT	4 kg (9 lb)

HUGHES



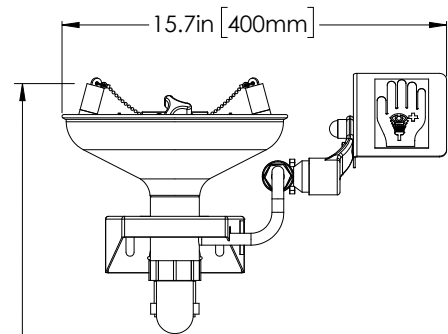
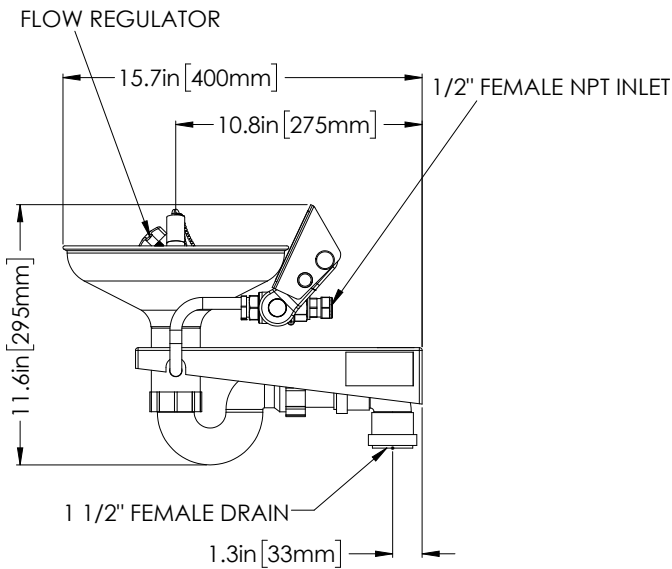
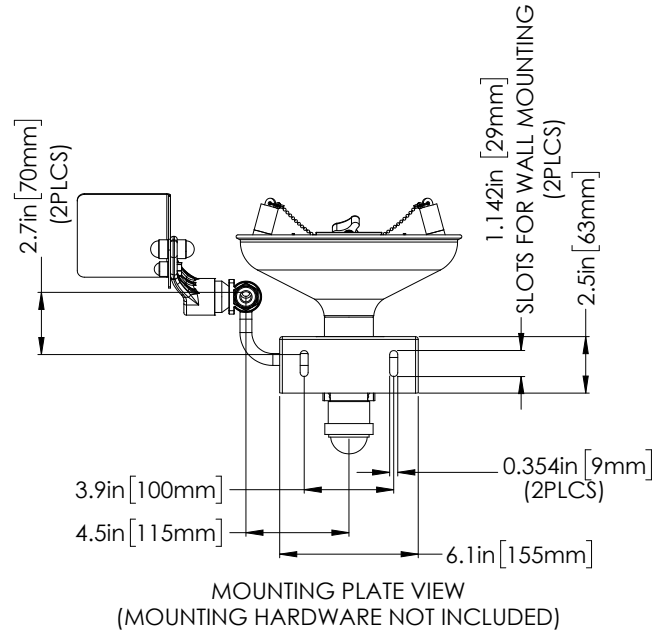
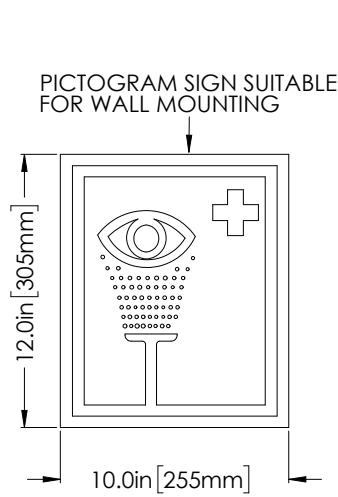
HUGHES-SAFETY-SHOWERS.COM

Justrite Safety Group

RM07282 RevA

hughes-safety-showers.com

Emergency Eye/Face Wash - Plumbed in Type: Wall Mounted



TO COMPLY WITH ANSI Z358.1: EYE/FACE WASH NOZZLES SHALL BE POSITIONED 33 in [83.8 cm] TO 45 in [114.3 cm] FROM STANDING SURFACE. FLUSHING FLUID SHALL NOT EXCEED 8 in [20.3 cm] ABOVE NOZZLES.

VARIATIONS IN MANUFACTURING AND ASSEMBLY ALLOW FOR $\pm 1/8$ IN [3MM] PER THREADED JOINT.

For Technical Support Contact:
customer.service@hughes-safety.com • 1-866-312-1652

For Reorder & Sales Support Contact:
custserv@justrite.com • 1-800-798-9250



Hughes North America
457 Campbell Street
Sarnia, Ontario N7T 2J1, Canada.