

Quote Only

Order Form

Custom Disposal Can Specification Form

End User:

Co. Name: _____

Co. Address: _____

Contact: _____

Phone: _____

End User Mark Number for this Assembly: _____
(This is your internal identification of this custom product.)

Application Type: _____
(Use to identify other specifics about this custom product, i.e. department, location, etc.)

Distributor:

Co. Name: _____

Co. Address: _____

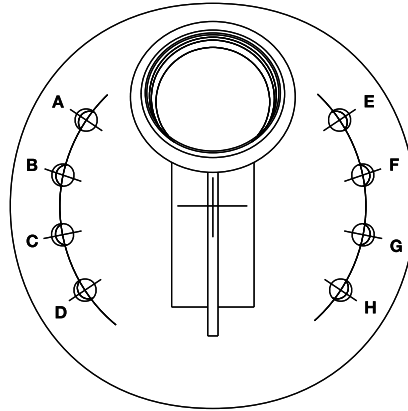
Phone: _____

Distributor Contact: _____

Justrite Sales Contact: _____

Instructions:

1. Fill out one form for EACH design needed.
2. Complete the "End User" section in the upper left
3. Choose a Base Can size and quantity
4. Select the desired quick-disconnect fitting sizes and material
5. Indicate quantity and location for each fitting
6. Submit completed form to custserv@justrite.com or to your distributor
7. Once received, pricing will be added and the form will be returned for approval. Production will not proceed until authorized approval is received.



Base Can

#12751 2 Gal. (7.5 L)

Quantity Needed: _____

Price \$ _____

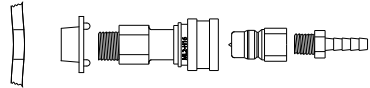
#12754 5 Gal. (19 L)

Quantity Needed: _____

Price \$ _____

Stainless Steel Fitting 1/4" (6mm) Tube

#12013 Installed Price \$ _____



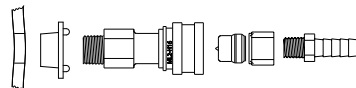
Disconnect Assembly **Stainless Steel with PTFE** Seals - 1/4" (6mm) Flow, 1/4" (6mm) Tube ID

Quantity per Assembly _____

Locations (A,B,C,D,E,F,G or H) _____

Stainless Steel Fitting 3/8" (10mm) Tube

#12014 Installed Price \$ _____



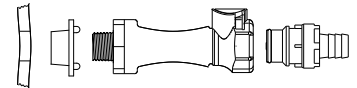
Disconnect Assembly **Stainless Steel with PTFE** Seals - 1/4" (6mm) Flow, 3/8" (10mm) Tube ID

Quantity per Assembly _____

Locations (A,B,C,D,E,F,G or H) _____

Polypropylene Fitting 3/8" (10mm) Tube

#12012 Installed Price \$ _____

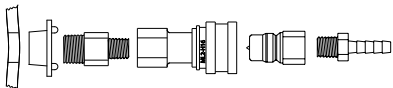


Disconnect Assembly **Polypropylene with EPDM** Seals - 1/4" (6mm) Flow, 3/8" (10mm) Tube ID

Quantity per Assembly _____

Locations (A,B,C,D,E,F,G or H) _____

#12015 Installed Price \$ _____

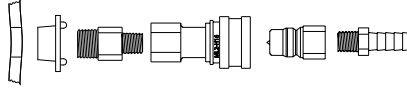


Disconnect Assembly **Stainless Steel with Viton** Seals - 1/4" (6mm) Flow, 1/4" (6mm) Tube ID

Quantity per Assembly _____

Locations (A,B,C,D,E,F,G or H) _____

#12016 Installed Price \$ _____



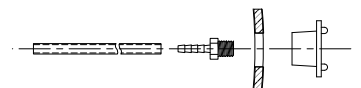
Disconnect Assembly **Stainless Steel with Viton** Seals - 1/4" (6mm) Flow, 3/8" (10mm) Tube ID

Quantity per Assembly _____

Locations (A,B,C,D,E,F,G or H) _____

Suction Tube S. S. Fitting 1/4" (6mm)

#12020 Installed Price \$ _____

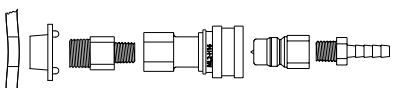


Suction Option Assembly
Must Be Used with Disconnect Assembly

Quantity per Assembly _____

Locations (A,B,C,D,E,F,G or H) _____

#12017 Installed Price \$ _____

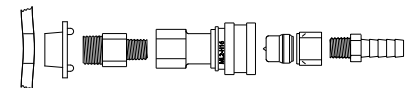


Disconnect Assembly **Stainless Steel with EPDM** Seals - 1/4" (6mm) Flow, 1/4" (6mm) Tube ID

Quantity per Assembly _____

Locations (A,B,C,D,E,F,G or H) _____

#12018 Installed Price \$ _____



Disconnect Assembly **Stainless Steel with EPDM** Seals - 1/4" (6mm) Flow, 3/8" (10mm) Tube ID

Quantity per Assembly _____

Locations (A,B,C,D,E,F,G or H) _____

NOTE: A minimum of two disconnect fittings are required, one intake and one vent. Unless otherwise specified, vent fitting will be same as intake fitting.

Because of the complex nature of chemicals, Justrite cannot offer specific recommendations on chemical compatibility. **Custom Cans are not returnable.**

For Internal Use Only:

Justrite Order No.: _____

Date: _____

Customer Service Rep: _____

I have reviewed this form for correctness.
Customer Service Manager: _____

Price One Custom Can: \$ _____

Total Price _____

Quote Only \$ _____

Order \$ _____

P.O. # _____

End User Approval Signature: _____

Approval Date: _____