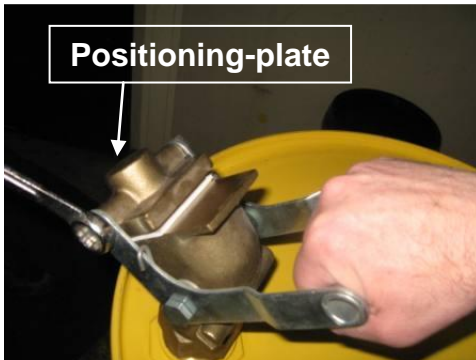
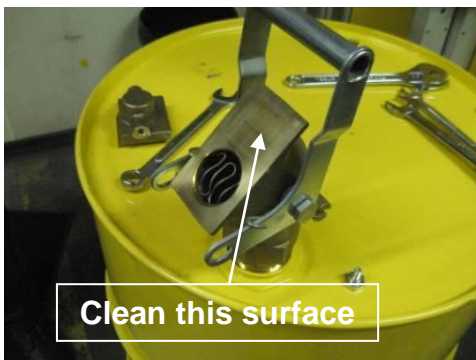


Instructions:

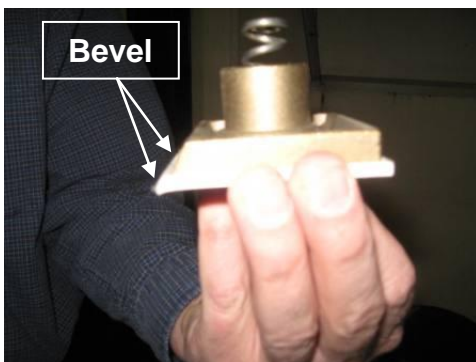
To Install 08292 PTFE Replacement Gasket Pad for Viscous Fluid Faucet 08552



1) This step is a two-person job. One person should hold the spring loaded handle while the other use a 3/4" wrench to remove the two shoulder bolts that secure the "brass positioning-plate".



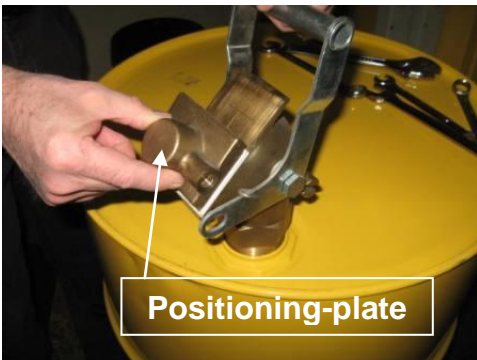
2) You can now relax the handle. This is a view of the valve unassembled. It is a good idea to clean the brass slide surface clear of grime before installing the new gasket. If there are, any gouges in the brass slide surface replace the entire faucet.



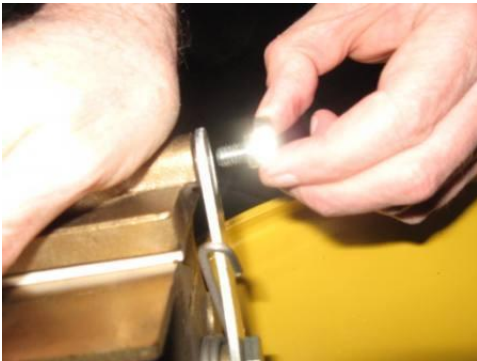
3) Make sure you seat the "brass gasket pad bearing-plate" into the inset of your new "PTFE gasket pad". Orient both bevels in the same direction (as shown).



4) Orient the “brass positioning-plate”, “bearing-plate”, “PTFE gasket pad” and “compression spring” as shown left and below. Note: how the specific geometry is orientated for each part in the picture (both bevels are opposite of the handle’s grip).



5) Again, this step is a two-person job. With one person holding the spring loaded handle; have them position the handle at a location convenient for the other person to reinstall the shoulder bolts. With one hand compress down the spring loaded brass-positioning plate while using the other hand to insert and tighten the shoulder bolt. Then move to the other side.



6) Repeat the procedure above for the second bolt on the other side.



7) Once both shoulder bolts are secure, tighten them both with a 3/4" wrench. Check to make sure the gate valve opens and closes freely with the handle. If it works fine, you can install the faucet on a drum, and if it does not leak, you have done a good job. Please, verify your work.

Note: The drum used in these pictures has never contained flammable liquids (we used this drum for convenience). Please do not use a drum that has been used for flammable liquids while performing this operation to prevent the accidental ignition of vapors. Securing the faucet in a bench vice is a good alternative. But take all precaution not to damage the threads or wrench flats; brass is a very soft metal.