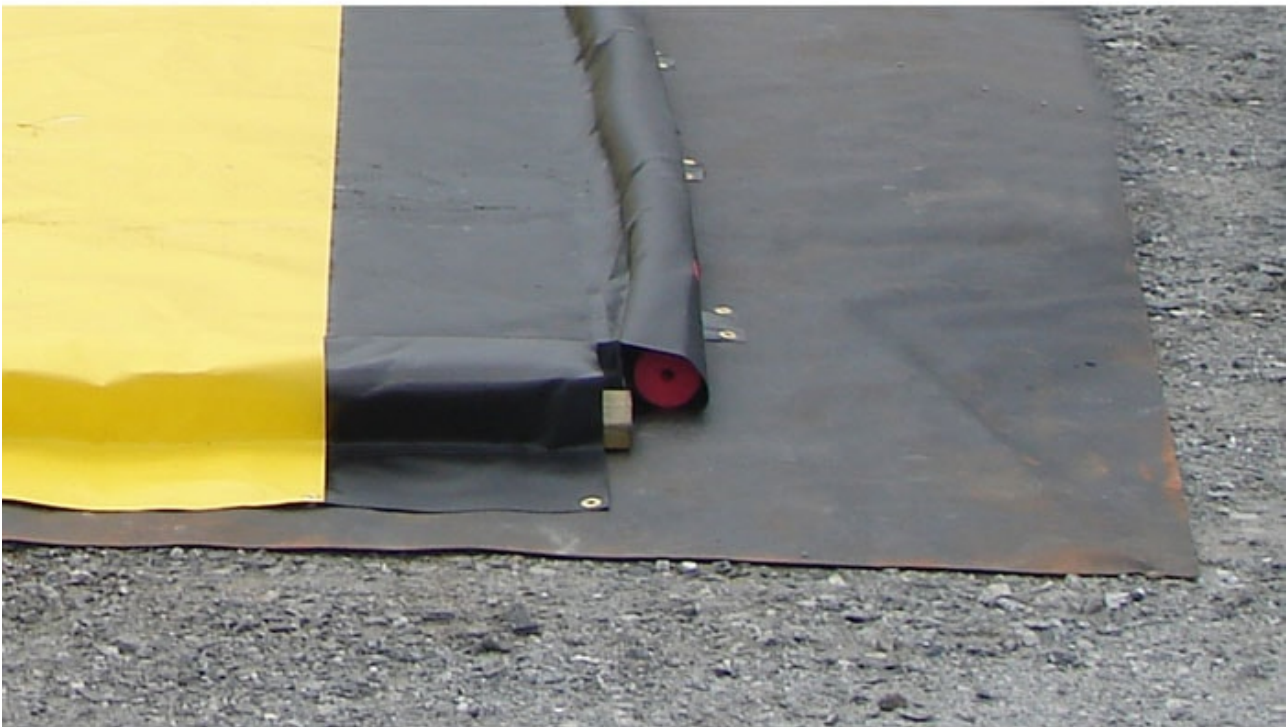


6'W x 28'L, Ground Mat - 28356

Product Images



Short Description

- Improve berm longevity without sacrificing functionality
- Create a smooth, uniform deployment area with this heavy-duty woven fabric
- Place under berm for improved wear resistance against rocks and construction debris

Description

Improve berm longevity without sacrificing functionality. Create a smooth, uniform deployment area with this heavy-duty woven fabric. Place under berm for improved wear resistance against rocks and construction debris.

Dimensions: 6-ft W x 28-ft L

Specifications

Model No	28356
UPC	697841157583
International Model No.	28356
Color	Black
Material Specifications	Woven Fabric
Dimensions, Exterior	72" W x 336" L
	1829mm W x 8534mm L
Net Weight, lbs	62.0
Net Weight, kg	28.1