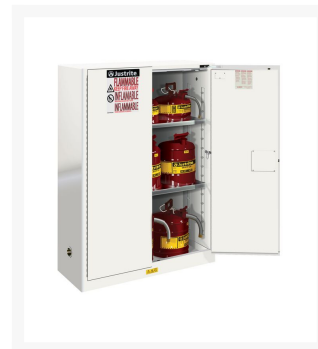
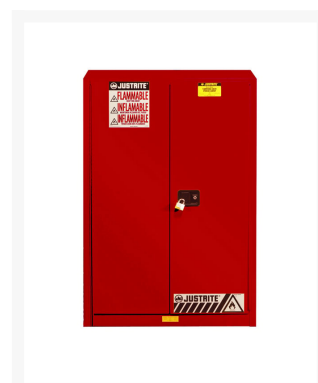




45 gallon Flammable Safety Cabinet, 2 Self-Close Doors - Sure-Grip® EX

Product Images





Short Description

- Protect workers
- Reduce fire risks
- Meet safety codes
- Ten-year warranty
- Multiple color options available

Description

Protect workers, reduce fire risks, and improve productivity by storing flammable fuels and chemicals in code-compliant safety cabinets. Designed to meet OSHA and NFPA standards, Sure-Grip® EX cabinets are constructed of sturdy 18-gauge (1-mm) thick double-wall, welded steel with 1-1/2" (38-mm) of insulating air space for fire resistance. High-performance, self-latching doors close easily and securely for maximum protection under fire conditions. Fail-safe closing mechanism ensures three-point stainless steel bullet latching system works every time.

For added security, U-Loc™ handle comes with a cylinder lock and key set or accepts an optional padlock. Haz-Alert™ reflective warning labels are highly visible under fire conditions or during power outages when illuminated with a flashlight.

Patented SpillSlope® galvanized steel shelves direct spills to back and bottom of a leakproof 2" (51-mm) bottom sump. They adjust on 3" (76-mm) centers for versatile storage. Cabinets also feature dual vents with flame arresters, four adjustable self-leveling feet, grounding connector, and trilingual warning label. Durable lead-free epoxy/polyester powder-coat finish provides excellent chemical resistance.

Manual-close door(s) opens to a full 180 degrees and self-latches when pushed closed. Self-close door(s)

shuts and latches automatically when a fusible link melts at 165°F (74°C) under fire conditions. Unique, concealed self-closing mechanism offers obstruction-free access to contents.

All door styles meet OSHA and NFPA 30; self-close door styles also meet NFPA 1 and the International Fire Code.

Most cabinets are FM approved and all come with a ten-year warranty.

Specifications

Model No	894520 / 894521 / 894523 / 894525
Material Specifications	18-Gauge CR Steel
FM Approval	Yes
OSHA Compliance	Yes
Complies with International Fire Code	Yes
Complies with NFPA Code 30	Yes
Complies with NFPA 1 Fire-Code	Yes
Capacity	45 gallon
Liter Capacity	170
Number of Doors	2
Door Type	Self-close
Number of Shelves	2
Adjustable Shelves	Yes
Dimensions, Exterior	65" H x 43" W x 18" D
	1651mm H x 1092mm W x 457mm D
Dimensions, Interior	60.5" H x 39.5" W x 14.6" D
	1537mm H x 1003mm W x 370mm D
Net Weight, lbs	272.0
Net Weight, kg	123.4

Prop 65

⚠️WARNING: This product can expose you to chemicals including lead, which is known to the State of California to cause cancer and birth defects or other reproductive harm. For more information go to www.P65Warnings.ca.gov.

Product Options

Color:	Red
	Yellow
	Gray
	white