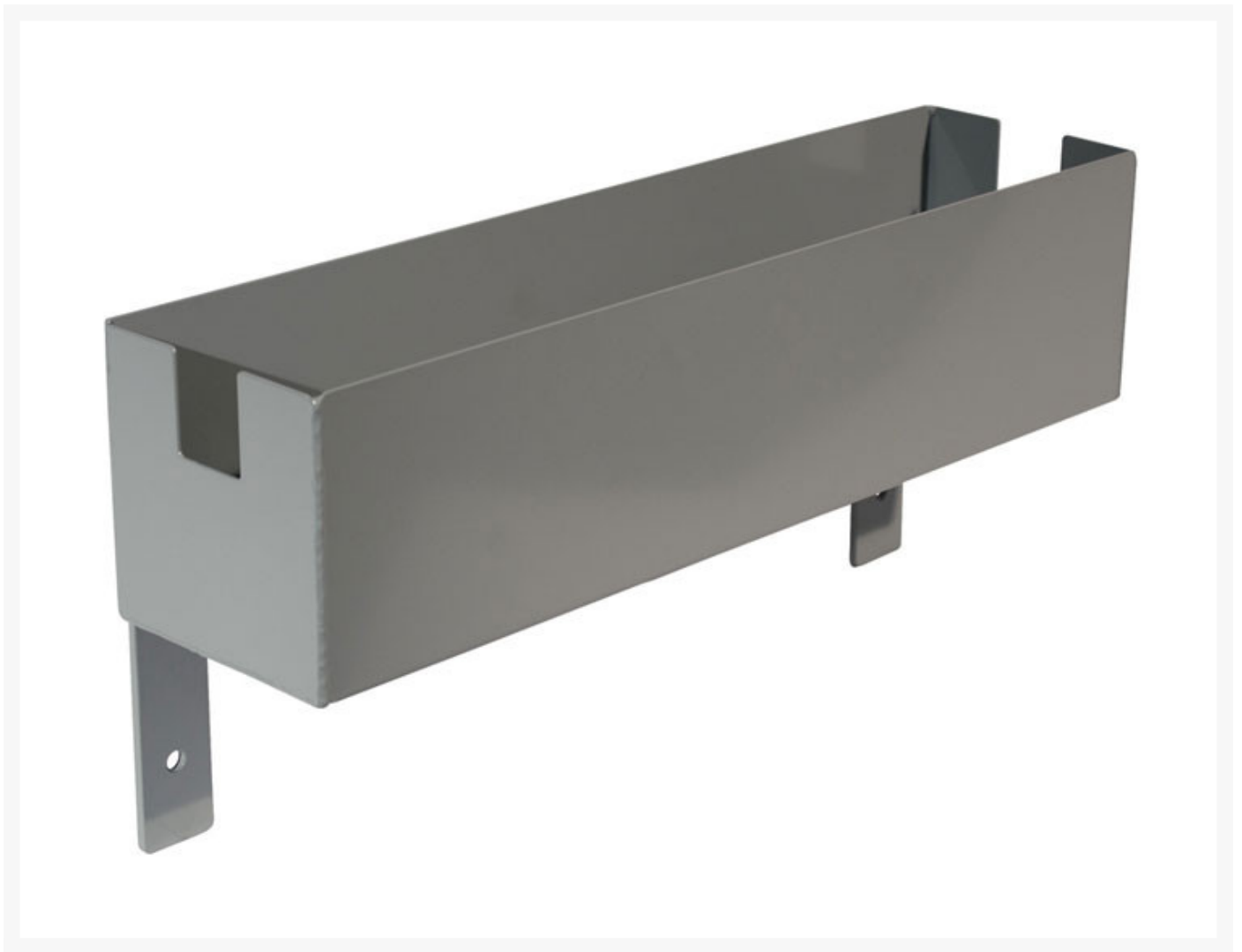


Tool Tray Attachment for Double Cylinder Hand Trucks - 35388

Product Images



Short Description

- Powder coat paint finish for longer life span
- Mounting hardware included

Description

Tool tray for all double cylinder Justrite hand trucks is capable of housing a complete oxyacetylene welding kit. Fully welded steel construction with powder-coated finish for improved chemical resistance and a longer life span. Includes mounting hardware.

Specifications

Model No	35388
UPC	697841211407
Material Specifications	Steel
Net Weight, lbs	10
Net Weight, kg	4.5
Net Dimensions (W x D x H)	20 x 5 x 8 inches
	508 x 127 x 203 mm